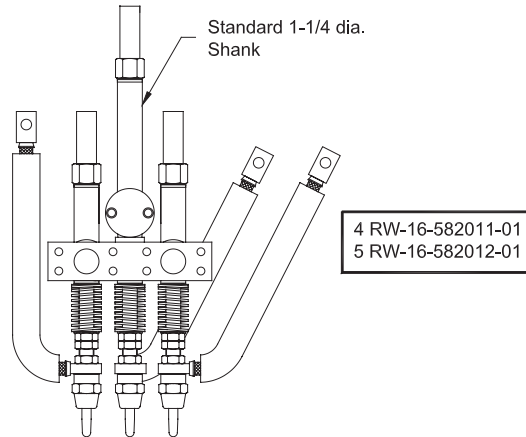


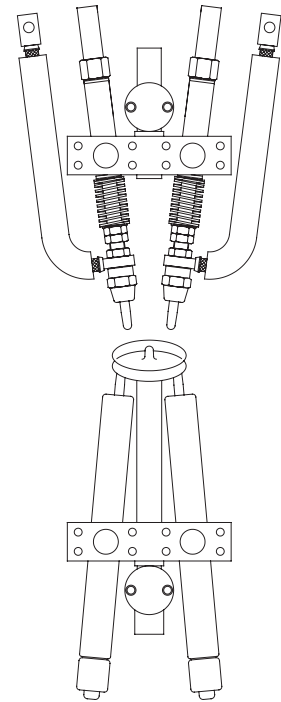
APPLICATION SHEET FOR TYPICAL MULTIPLE SPOT WELDING SETUPS

Typical Set Up For
3 Spots at a time in Parallel

- 1 CMW Std. 1150 Series Adapter
- 2 CMW Std. 1100 Series Holders
- 1 CMW Special 1100 Series Holder

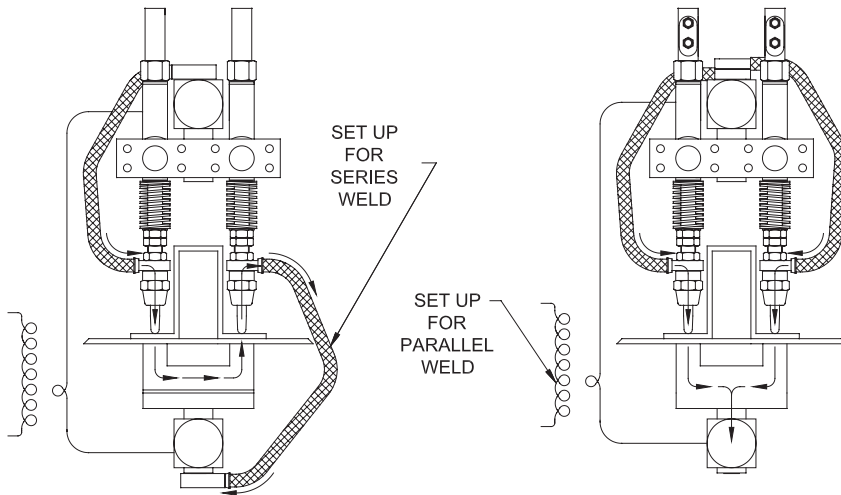


Typical Set Up For
2 spots simultaneously
in parallel



Upper
2-1100 Series Holders
1-1150 Series Adapter

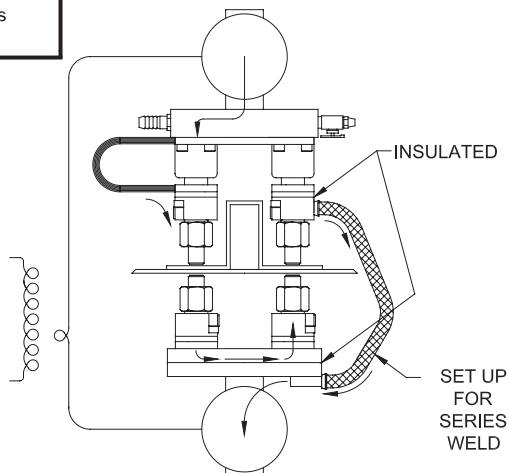
Lower
2-100,200 or 300 Series Holders
1-1150 Series Adapter with special
center shank



Contact Factory
All above items
priced and made
to special order
Illustrations
only

TYPICAL SET UP OF 800 SERIES "NU-TWIST"® UNITS

For dual spot welding using hydraulic "Nu-Twist"® Pressure equalizing subassemblies
and surface mounted adapters as basic building blocks



Upper
two
18-826
hydraulic
unit assemblies
mounted on
fixed centers
(See Pages
52, 53, 56)

Lower
two
18-801
surface
mounted
"Nu-Twist"®
Adapters
(See page 48)

